


From the Caradigm User login screen, look for the "Unlock Account" link.



CHI St. Luke's Health

Caradigm User

Please enter valid user credentials for the system.

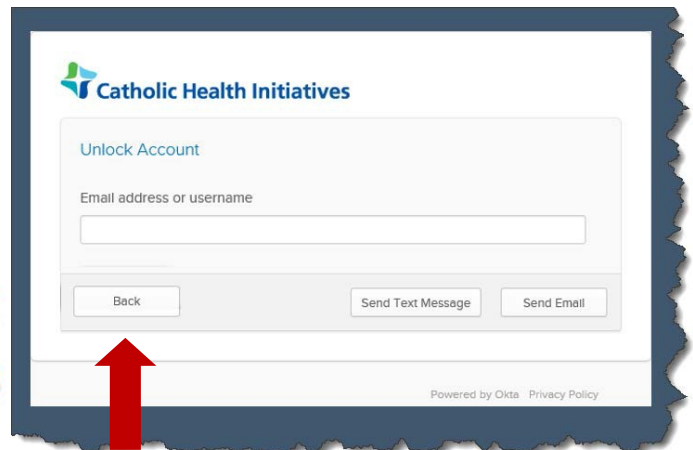
User name

Password

Log on to: CHI
Restart Machine
[Kronos Web Timestamp](#)
[Unlock Account](#)

Other Credentials

1 To reset the password, click "Unlock Account."



Catholic Health Initiatives

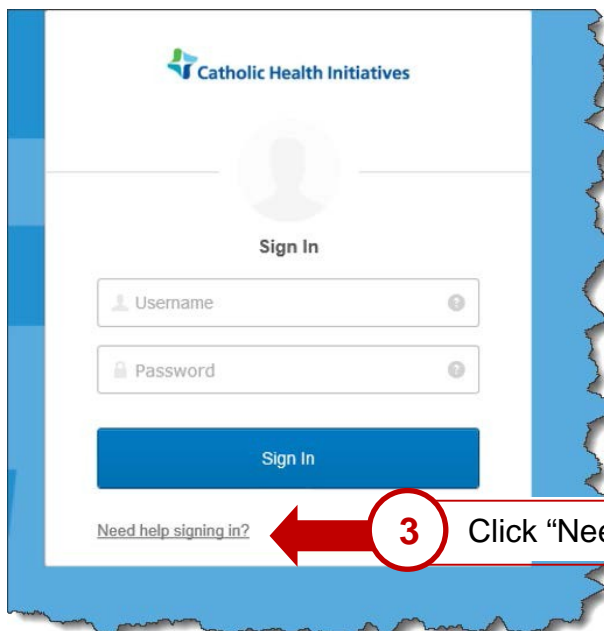
Unlock Account

Email address or username

Back Send Text Message Send Email

Powered by Okta Privacy Policy

2 For password reset, click "Back."



Catholic Health Initiatives

Sign In

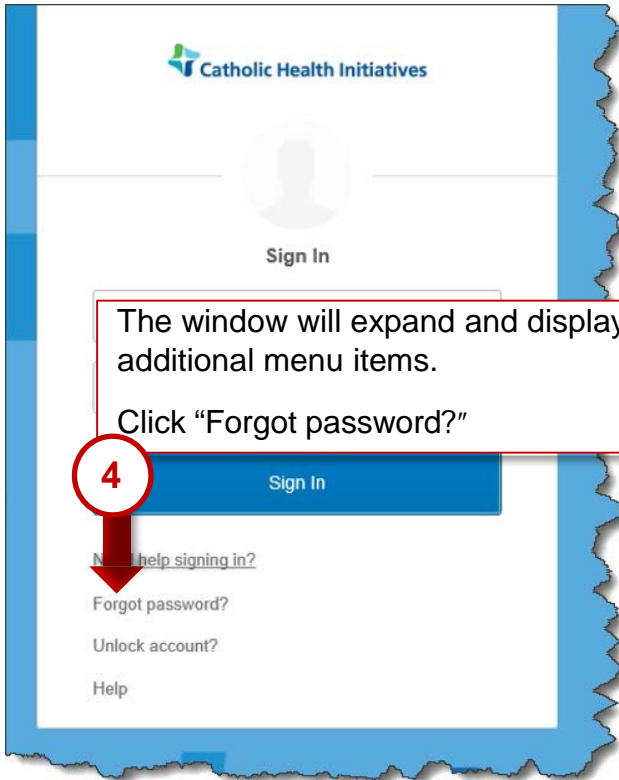
Username

Password

Sign In

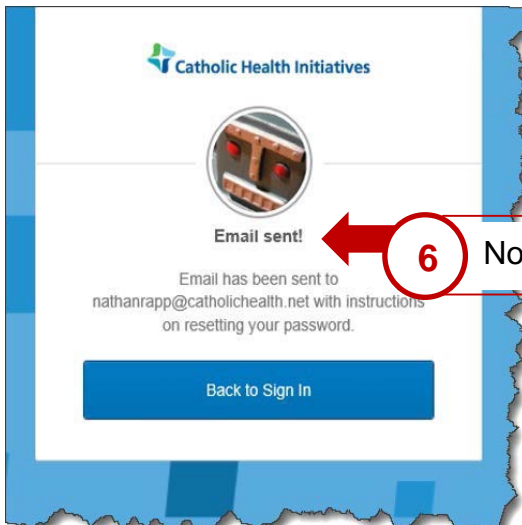
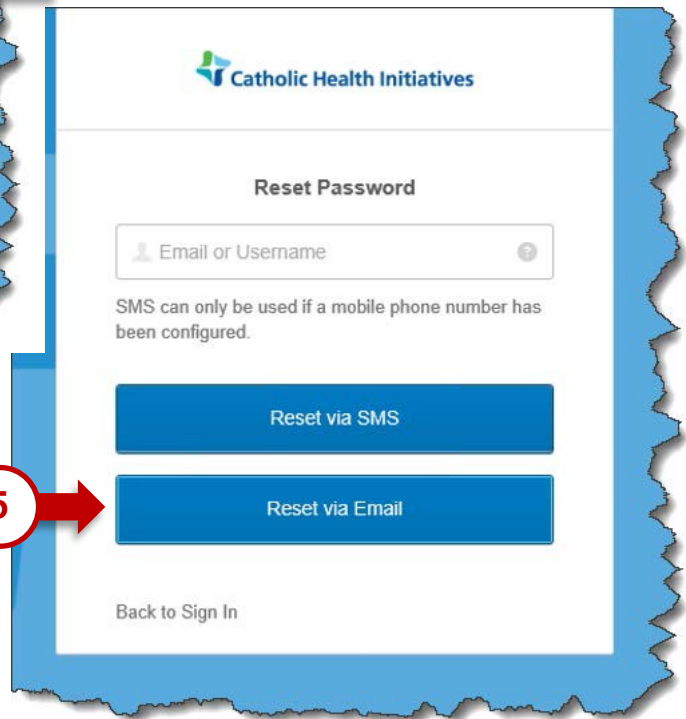
[Need help signing in?](#)

3 Click "Need help signing in?"



To receive a reset notification via email, click "Reset via Email."

5

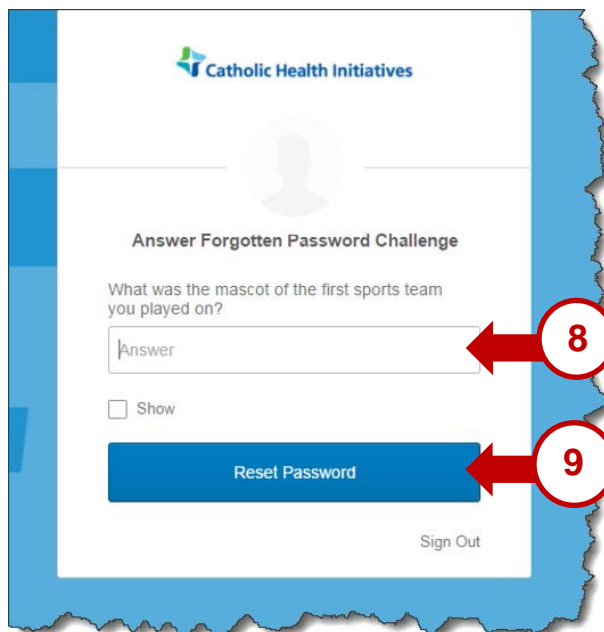
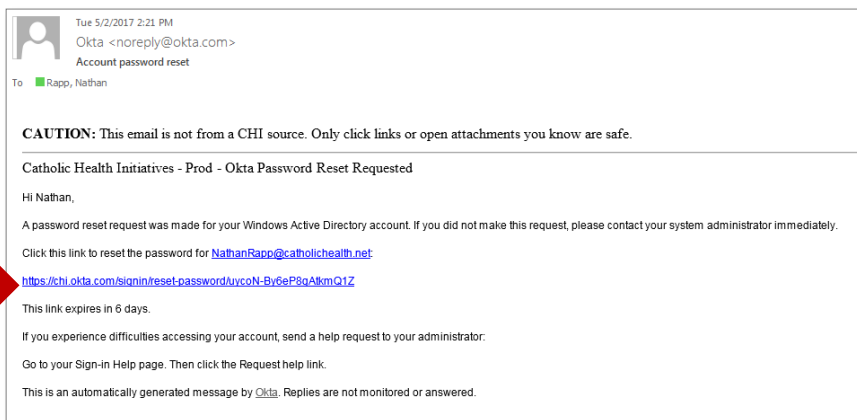


6 Notification displays that an email has been sent.

Reminder: Per CHI IT policies, you may not use the CHI network to access another account, such as Gmail. However, clicking "Send Email" will generate an email that will be sent to both your CHI email account and the secondary email account you submitted during the CHI Easy Access registration process. The email will include instructions, a code and a link to re-establish your login capability.

Open your email and locate the email sent by CHI Easy Access (Okta). Click the link in the email to access the password reset tool.

7

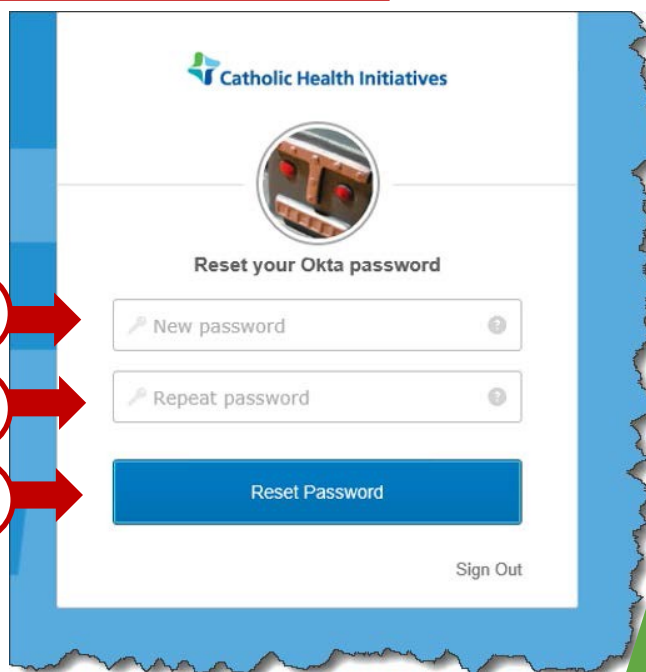


You will be prompted to answer the security question you chose during the registration process.

8

Click "Reset Password."

9



Enter a new password.

10

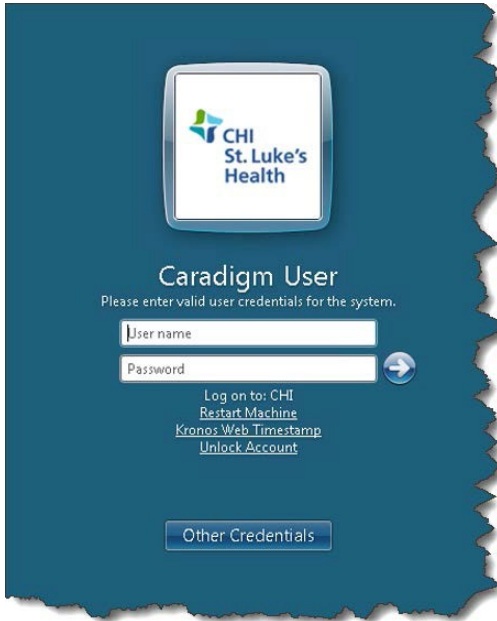
Re-enter new password for verification.

11

Click "Reset Password."

12

Your password will be reset. You can return to the Caradigm User login screen and proceed with logging in.



CHI
St. Luke's
Health

Caradigm User

Please enter valid user credentials for the system.

User name

Password

Log on to: CHI
[Restart Machine](#)
[Kronos Web Timestamp](#)
[Unlock Account](#)

Other Credentials

Note:

The password synchronization process may take up to 15 minutes.

Be sure to update your password on all personal devices (mobile phones, etc.) that access CHI email or wireless networks so you don't get locked out of your account.